



Campbell Transportation Company
P.O. Box 124
Charleroi, PA 15022

Campbell Transportation Company

M/V Bonnie C. Survey/Repair Report



M/V Bonnie C. Survey Report

Vessel Particulars

Official Number: 275144
Year Built: 1957
Builder, Hull No.: Yates Marine Construction/C&C Marine Maintenance
Dimensions: 60'-0" x 20'-0" x 6'-3"
Propulsion Engines: 2- Detroit Diesel 12v71Engines, 800 HP@ 1800 RPM
Propulsion Red. Gear: 2-Twin Disc Red. Gears MG-514, 5.16:1 Reduction
Ship Service Diesel: Two (2) Detroit Diesel 2V7, 60KW Diesel Engine @ 1800 RPM
Rudder System: Four (4) Flanking, Two (2) Steering Rudders
Engine Cooling: Fernstrum Coolers
Fuel Capacity: 8,000 gallons (2-P/S tanks)
Deck Equipment: Two (2) 10-ton Wintec Electric Winches

MV Bonnie C. Photos



M/V Bonnie C. – View looking at Bow

Before Photos



MV Boaz After Fire – Port Bow View



M/V Boaz After Fire – Port Profile

After Photos



MV Bonnie C. – Stbd Bow View

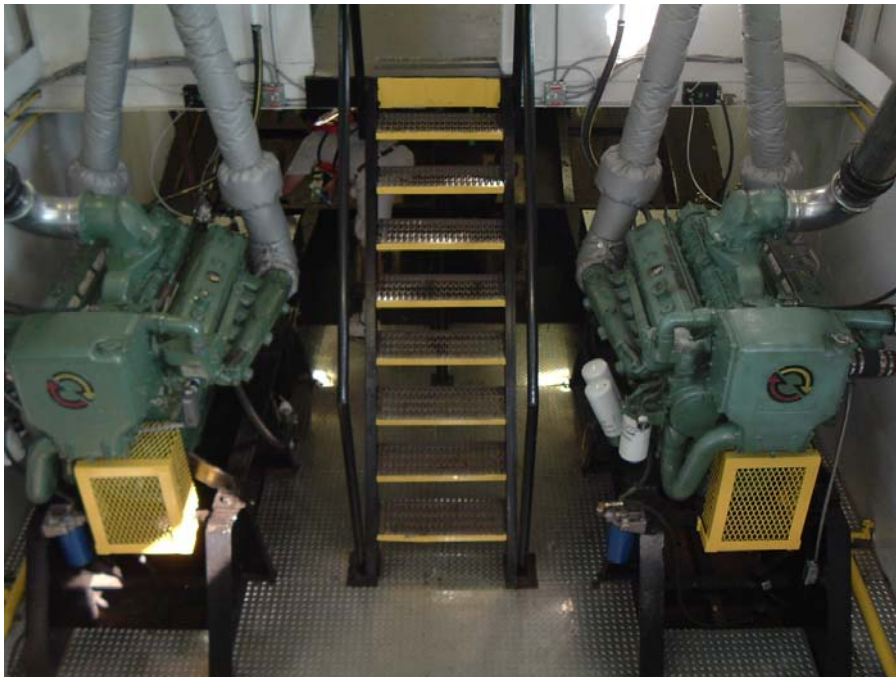


Lower E/R – Looking Forward

After Photos



Stbd Main Engine



After E/R – Looking to Stern

After Photos



Bow, Main Deck



Generator Room – Aft Main Deck

After Photos



Stbd. Side – Main Deck



Port Side – Main Deck